

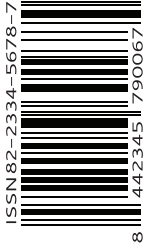
LOVING THE FLOW

SERIES 2- ISSUE 3: AUGUST 2019



THE FLOWHESION FOUNDATION

www.flowhessionfoundation.org.uk



Were
doing some
great activities
over summer! Have
a look at page 3 to
find out more
and do get
involved!

IN THIS GUIDE:

ASPIRE

BLAST FROM THE PAST! IBRAHIM AND AYAZ PUT THE **SPOTLIGHT** ON NATHANIEL LOFTHOUSE AND HOW HE MADE HIS MARK IN BOLTON'S HISTORY

VALUE

ADNA **TALKS ABOUT** EMMAUS WHOM PROVIDE A HOME - TO THE HOMELESS

BELONG

ZARA AND BILAL **EXPLORE** TURTON AND ENTWISTLE RESERVOIR

BUILD

HUDA AND ZAKIYA **RESEARCH** THE BOLTON COMMUNITY WALK, BRINGING COMMUNITIES TOGETHER

+ The voice of **GREATER**
MANCHESTER'S
Cohesion-Conscious Youth

MESSAGE FROM THE DIRECTOR AT THE FLOWHESION FOUNDATION



Summer is a really busy time at Flowhession. We deliver a wide-range of activities over the holiday period to marginalized BAME young people and their parents. This summer we have been delivering a summer club for over 40 young people each Sunday. Young people are keeping themselves busy, learning communication and interpersonal skills through painting, kite making, henna and lots of different arts and crafts.

We are also organizing a number of away days for instance, we have arranged for 25 mothers and their children to go to Southport for the day, we have also organized for 40 single mums to have an away day to wales where they will learn parenting, confidence building and lots of other empowerment and independence skills. The Foundation's vision has also been to empower people and develop them. We are proud that our services have become popular with Bolton's BAME communities and they are confident of the quality of services we are delivering.

Organizing such activities take a lot of resources and manpower. Therefore I was really pleased to see the time, effort and commitment that our young people who have written this issue put in to organizing the various summer events we have held and will be holding. They have understood that community development only becomes a reality through hard work and effort and rather than paying lip service to the cause. Therefore I would like to personally thank all of the writers who contributed to both this issue of the magazine and who gave their time to organize and mobilize members of our BAME communities.

Abdul Hafeez Siddique

Imam Abdul Hafeez Siddique
Executive Director

If you 'feel the flow' and want to get involved join the 'Flowhession Family' by emailing us at: admin@flowhessionfoundation.org.uk or connect with us at:

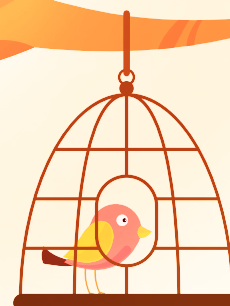


@flowhession

Summer fun at Flowhession!

We have been running a number of successful consultation events with many mums and young people who use our services. Our events included treats, bouncy castles and a lot of fun activities for everyone!

Our team of writers have also been really helpful in organizing these events; so well done!



Aspire

By Ibrahim Mustafa and Ayaz Patel



Nathaniel Lofthouse was an English professional footballer who played for Bolton Wanderers for his whole career. He won 33 caps for England between 1950 and 1958, scoring 30 goals, with one of the highest goals-per-game ratios of any England player.

Born in Bolton in 1925, Lofthouse joined the town's main club on 4 September 1939 and made his debut in a wartime 5–1 win against Bury on 22 March 1941 when he scored two goals. It was then more than five years until he made his league debut for the club, but he eventually played against Chelsea on 31 August 1946, when he scored twice in a 4–3 defeat. Lofthouse went on to play 33 games for England, but his debut on 22 November 1950 made him 25 when he finally broke into the team.

On 25 May 1952, Lofthouse earned the title 'Lion of Vienna' after scoring his second goal in England's 3–2 victory over Austria. In doing so he was elbowed in the face, tackled from behind, and finally brought down by the goalkeeper. Back from national team duty, he then scored six goals in a game for the Football League against the Irish League on 24 September 1952.

In 1952–53, he was named FWA Footballer of the Year. He scored a goal – but was on the losing side – in the famous 1953 FA Cup Final (aka 'The Matthews Final'), having previously scored in each round. That season he topped the First Division goal scoring charts with 30 goals. He featured in the 1954 World Cup side. Lofthouse scored twice against Belgium in a

match that ended 4–4. Injured for the next match, in the quarter final game against Uruguay he equalized in the 16th minute, after receiving the ball in the 18 yard box.

On 3 May 1958, almost five years to the day after losing the 1953 final, Lofthouse captained Bolton in the 1958 FA Cup Final against Manchester United. Bolton won the game 2–0 with Lofthouse scoring both goals.

On 26 November 1958, Lofthouse made his final England appearance, against Wales, at the age of 33, and he officially retired from the game in January 1960 because of an ankle injury, although his final league game was not until 17 December of that year, when he suffered a knee injury against Birmingham City. Lofthouse stands seventh in the list of English football's top division goal scorers.

After retiring from playing football, Lofthouse became the assistant trainer at Burnden Park, moving to the club's executive manager and president in 1986.

Lofthouse was the recipient of various honor's after retiring from the game. He later died on 15 January 2011, aged 85, in a nursing home in Bolton. Soon after Lofthouse's death a swell of support for a statue to be built in his memory started.

A year to the day after his death, Bolton Wanderers chairman Phil Gartside announced plans for one to be built and for the statue to be situated outside the Reebok Stadium. It was unveiled on 24 August 2013, three days before what would have been Lofthouse's 88th birthday.



Value

Adna Gafow

Emmaus is a homelessness charity providing more than just a bed for the night to people who have experienced homelessness and social exclusion.

Emmaus provides a home for as long as someone needs it.

Living in a stable environment with the opportunity to work helps our companions, as residents are known, to regain lost self-esteem and the confidence to get back on their feet.

There are currently 29 Emmaus communities across the UK, providing a home and meaningful work to more than 750 formerly homeless people.

Like any flourishing community, Emmaus is most successful when everyone makes a contribution. In return, companions are expected to work 40 hours per week or as much as they are able in the charity's social enterprise. They are required to sign off all benefits with the exception of housing benefit, which is claimed to help support the community.

The ultimate goal is for each community to become self-sufficient, supporting itself with the revenue it generates through its businesses.



Emmaus has a huge impact on restoring confidence and self-respect, as companions take responsibility for keeping their community going and work hard to support themselves and others.

Emmaus provides people with the tools to help themselves. This approach has been proven to produce long-term, sustainable results. For the many people who have been stuck in a cycle of homelessness, Emmaus provides the space and support they need to take stock of their lives and make positive changes for the future.

Solidarity, helping others less fortunate than yourself, is central to the Emmaus way of life. Everyone at Emmaus, including companions, staff, trustees and volunteers is encouraged to carry out acts of solidarity to support people who need it most.

Emmaus isn't just in the UK, in fact it originally started in France in the 1940s. Since then Emmaus has grown into an international movement with more than 300 groups based in 36 countries across the world.

Find out more about the history of Emmaus and the work of Emmaus International.





Belong

Zara Ahmed and Bilal Patel

Turton and Entwistle Reservoir is a water reservoir in the village of Edgworth, Lancashire, England. The reservoir contains almost 750 thousand imperial gallons (roughly 3,400,000 litres) and, with the Wayoh Reservoir just below, satisfies around 50% of Bolton's need for drinking water.

Previously as an Entwistle Dam, it was designed by Thomas Ashworth, a local land surveyor and overseen by Jesse Hartley, the Liverpool Docks engineer. It was built for the Commissioners of the Turton and Entwistle Reservoir, a group of local mill owners who obtained an enabling Act of Parliament in 1832 to regulate the supply of water in Bradshaw Brook for waterpower for the finishing textiles.

Records suggest it was built entirely of puddle clay with no distinct core. Earth dams usually have a waterproof cut-off under their earthworks designed to stop seepage under the dam but it is doubtful whether there was any such a cut-off at Entwistle.

The reservoir has a rock-cut outlet tunnel driven through the valley side rather than a culvert or pipeline and a siphon draw-off pipe. The dam is 108 ft high and 110 metres long at the crest.

The present overflow channel and valve tower were added by the Bolton Corporation Water Works who took over the reservoir in 1864.

At the time of its construction, the dam at Turton and Entwistle Reservoir was the highest in Britain, rising to a height of 108 ft from its base. It lies in

the village of Edgworth and was built to supply water to Bolton.

A well-marked path runs around the reservoir, and the total distance. It's worth noting that the path can get muddy in wet conditions. There is plenty of wildlife to view on the way including an abundance of waterfowl. Many other adjoining paths lead off into the surrounding woodz.

On the water itself, fly-fishing for trout is permitted.





Huda Kamal and Zakiya Patel



four miles long, with brief stops at places of interest - starting from the Parish Church, University of Bolton, Zakariyya Mosque, Bolton School, Krishna Mandir, Buddhist Centre and finally at the Friends Meeting House. Mayor of Bolton- Councillor Roger Hayes will be starting the walkers off at the Parish Church.

“Everyone welcome and can walk at their own pace and hope you have fun and build new friendships”, Chan Parmar.

This year, there will be an opportunity for a brief presentation by Philip Austin from the Friends Meeting House followed by a well-deserved refreshments and also a chance to chat- reflection about the walk with other colleagues.

Further details of the event are on the leaflet.



There is a lot of positive work going in Bolton, however one event has been going strong for a number of years.

One Bolton Community Walk organized in Partnership by Bolton Christian Community Cohesion, Bolton Council Of Mosques, Bolton Hindu Forum and Bolton Interfaith Council and has been a great event to bring different communities together and promote cohesion.

Every year, as part of enhancing Unity in our community, people from various backgrounds and ages take part in this walk which is approximately